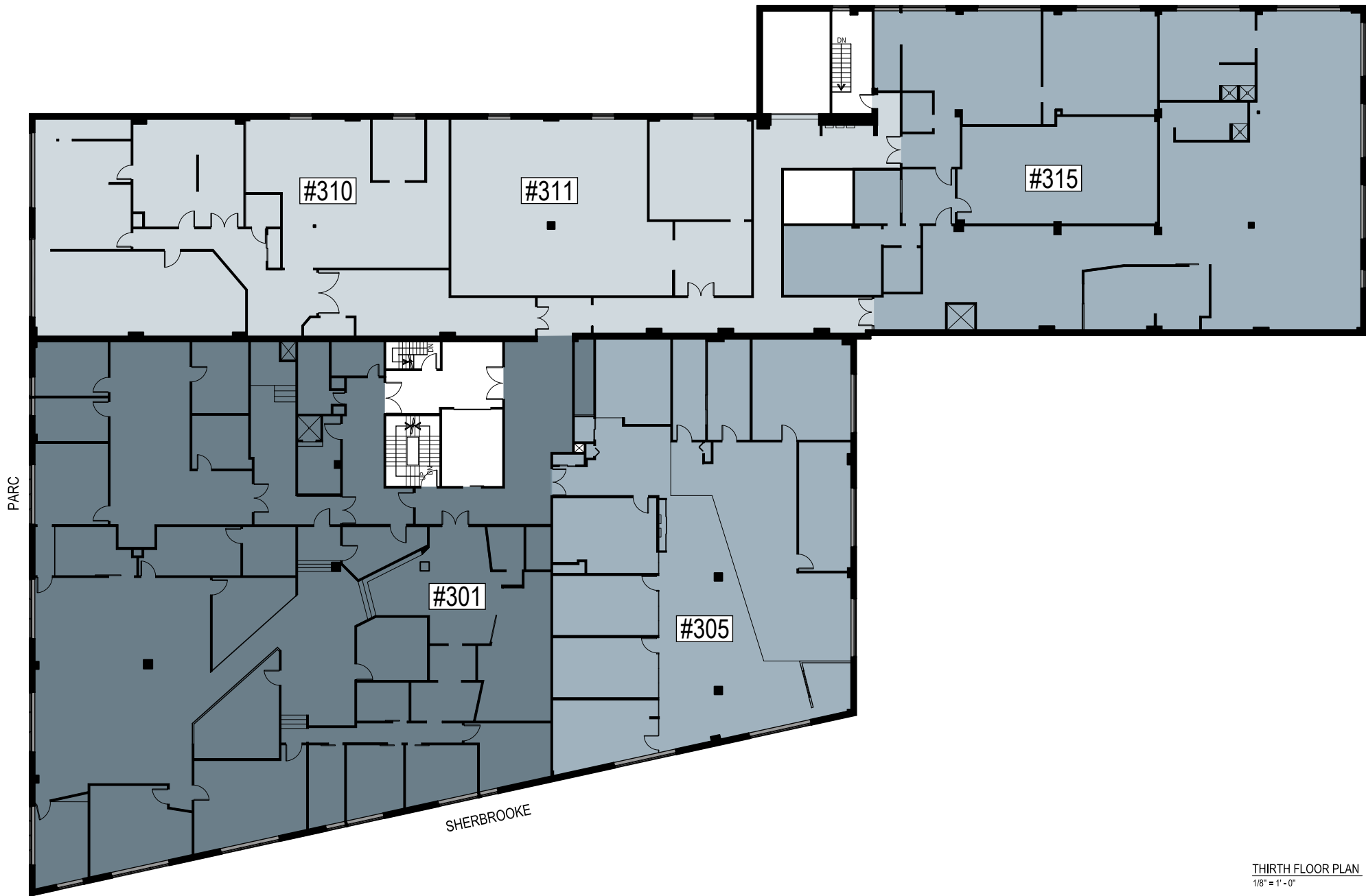
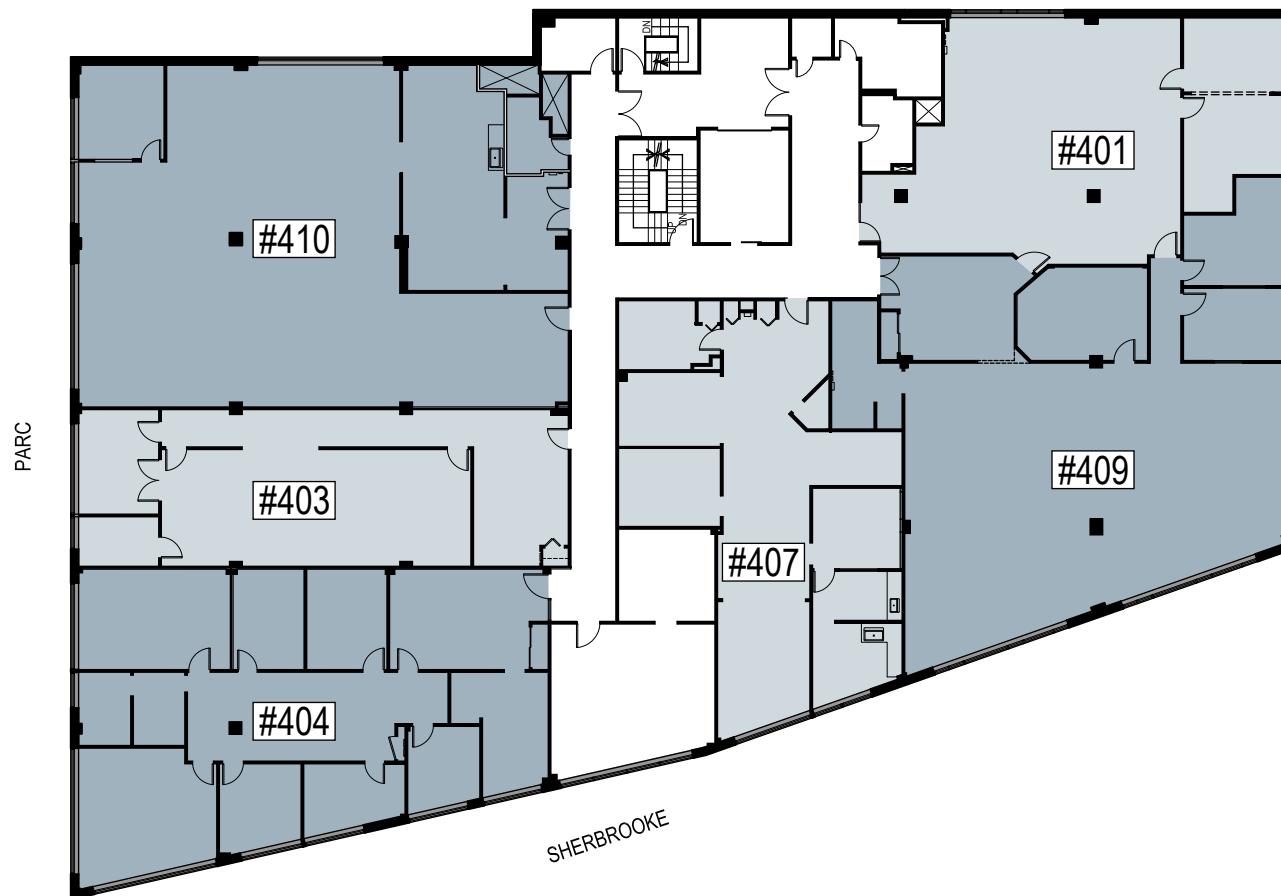


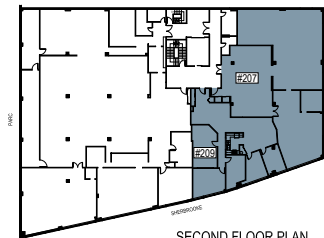
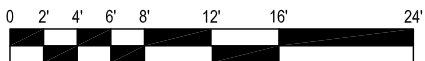
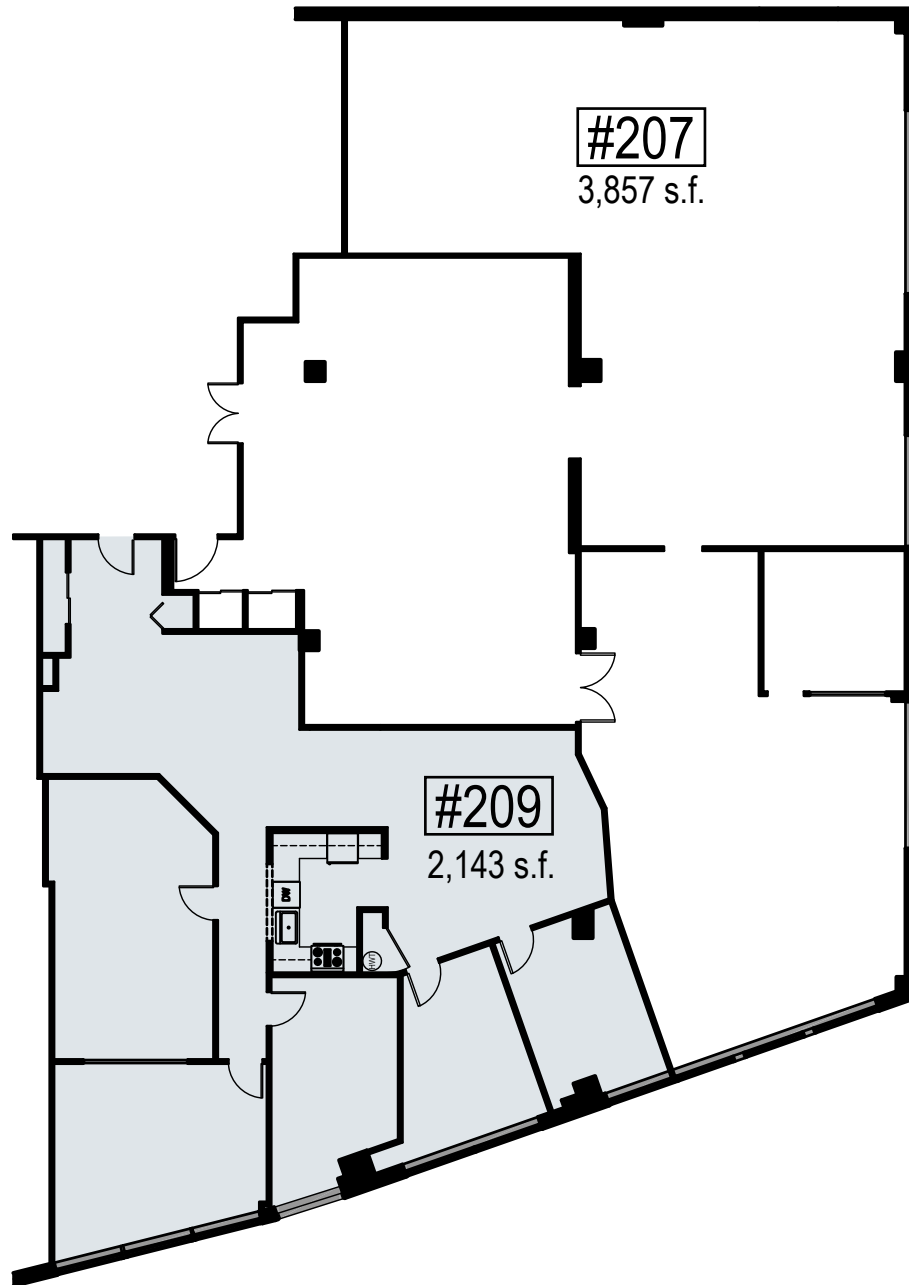
SECOND FLOOR PLAN
1/8" = 1' - 0"



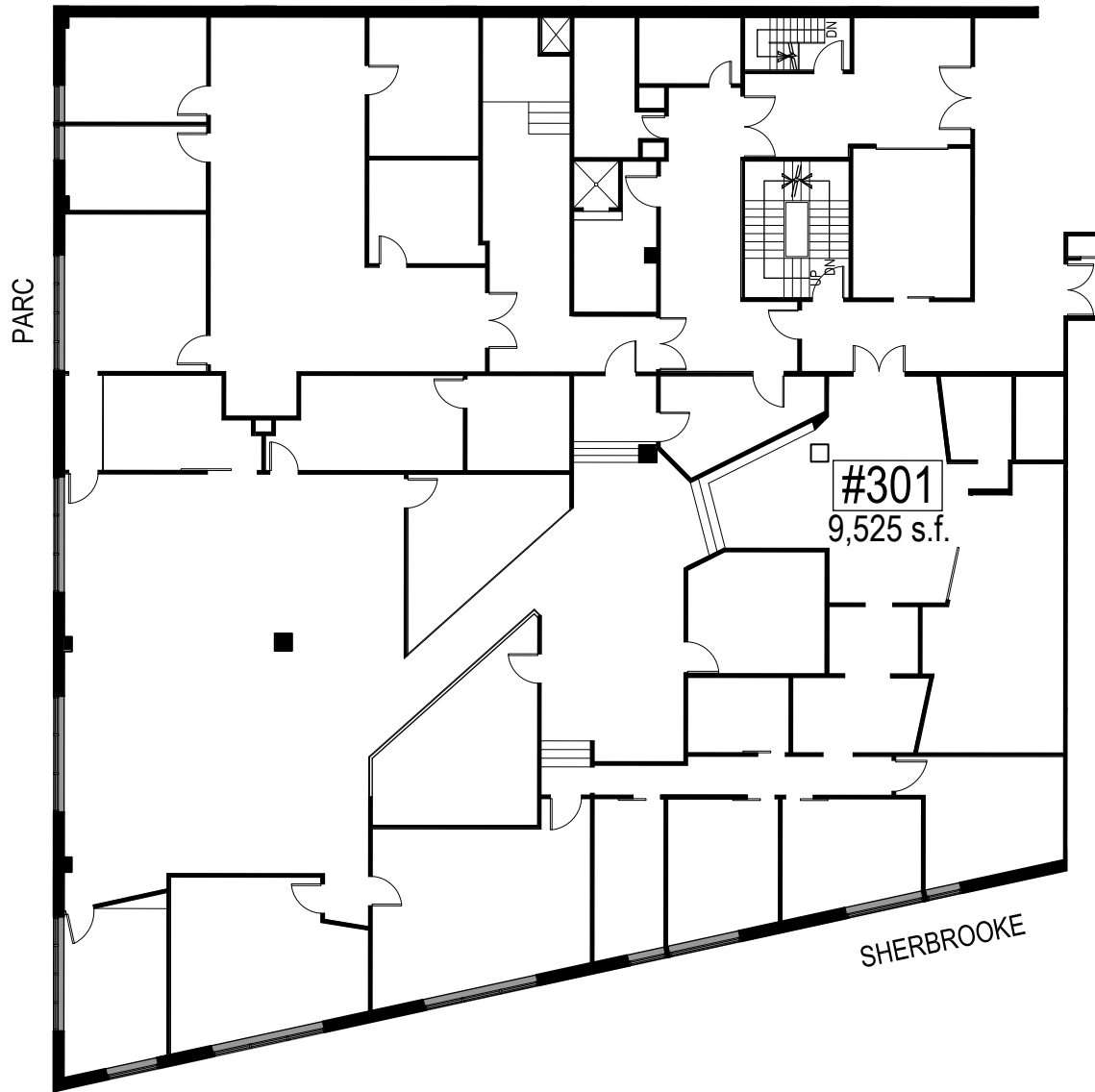
THIRD FLOOR PLAN
1/8" = 1' - 0"



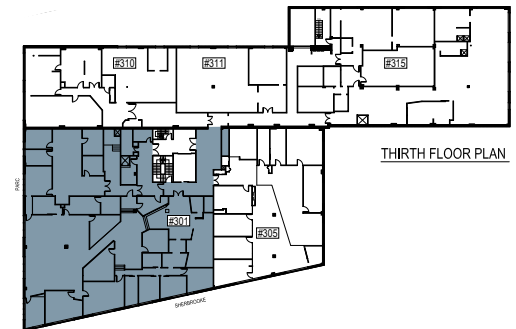
FOURTH FLOOR PLAN
1/8" = 1' - 0"



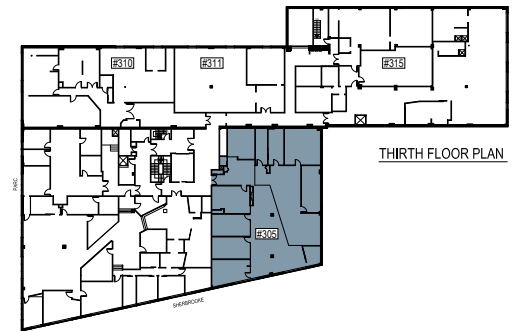
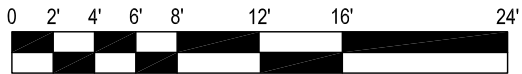
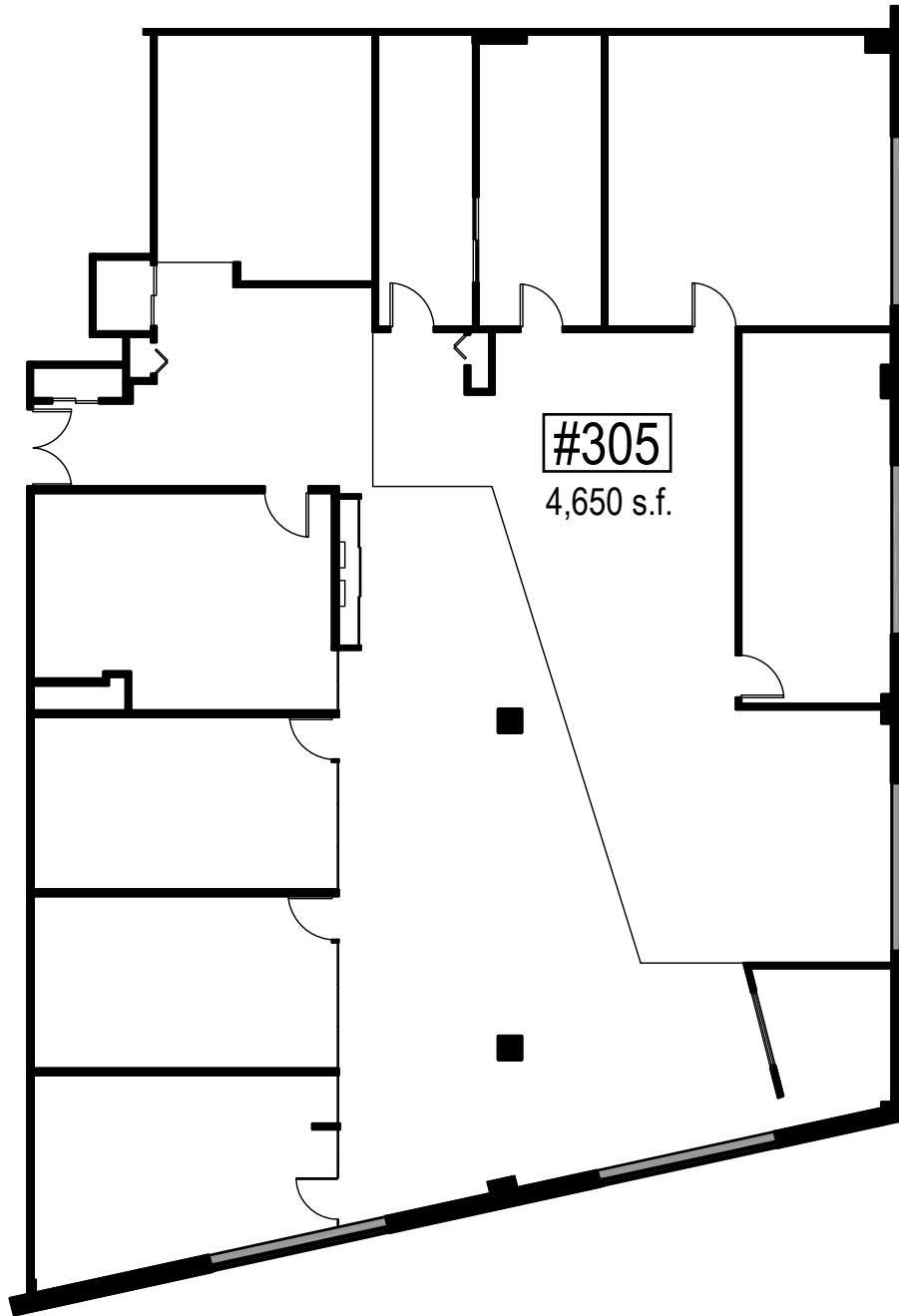
SECOND FLOOR PLAN

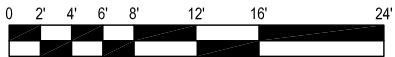
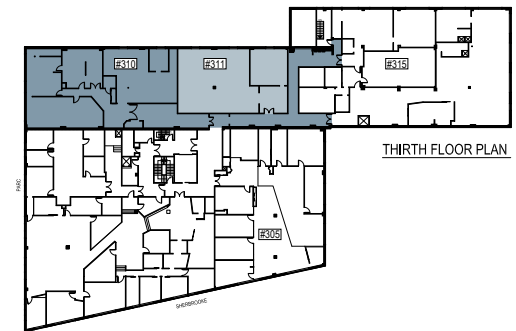
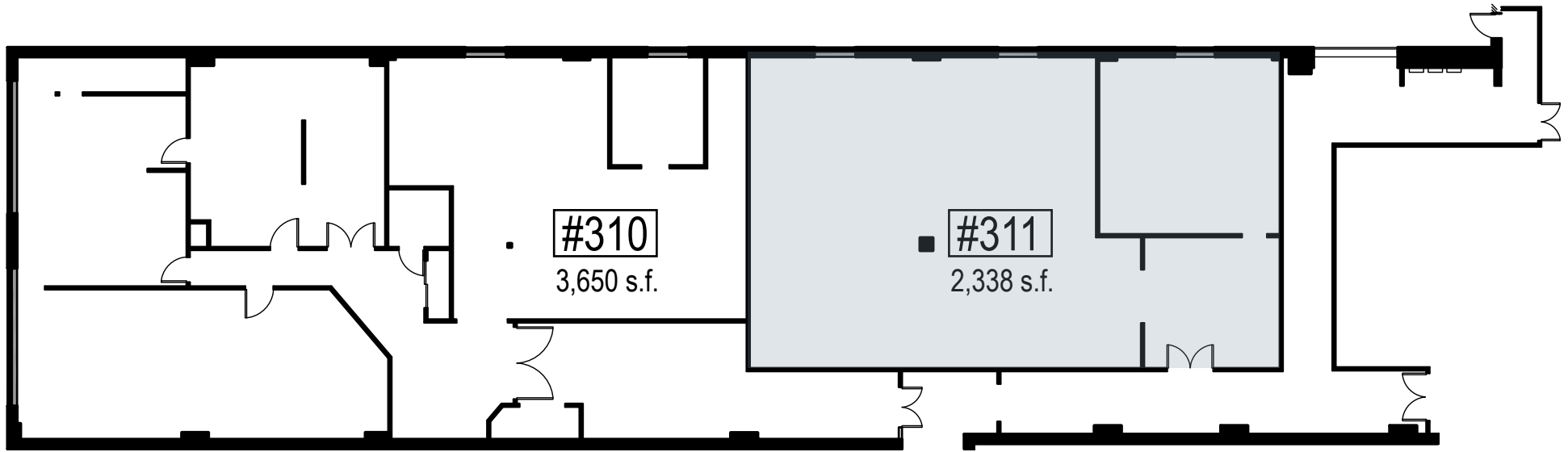


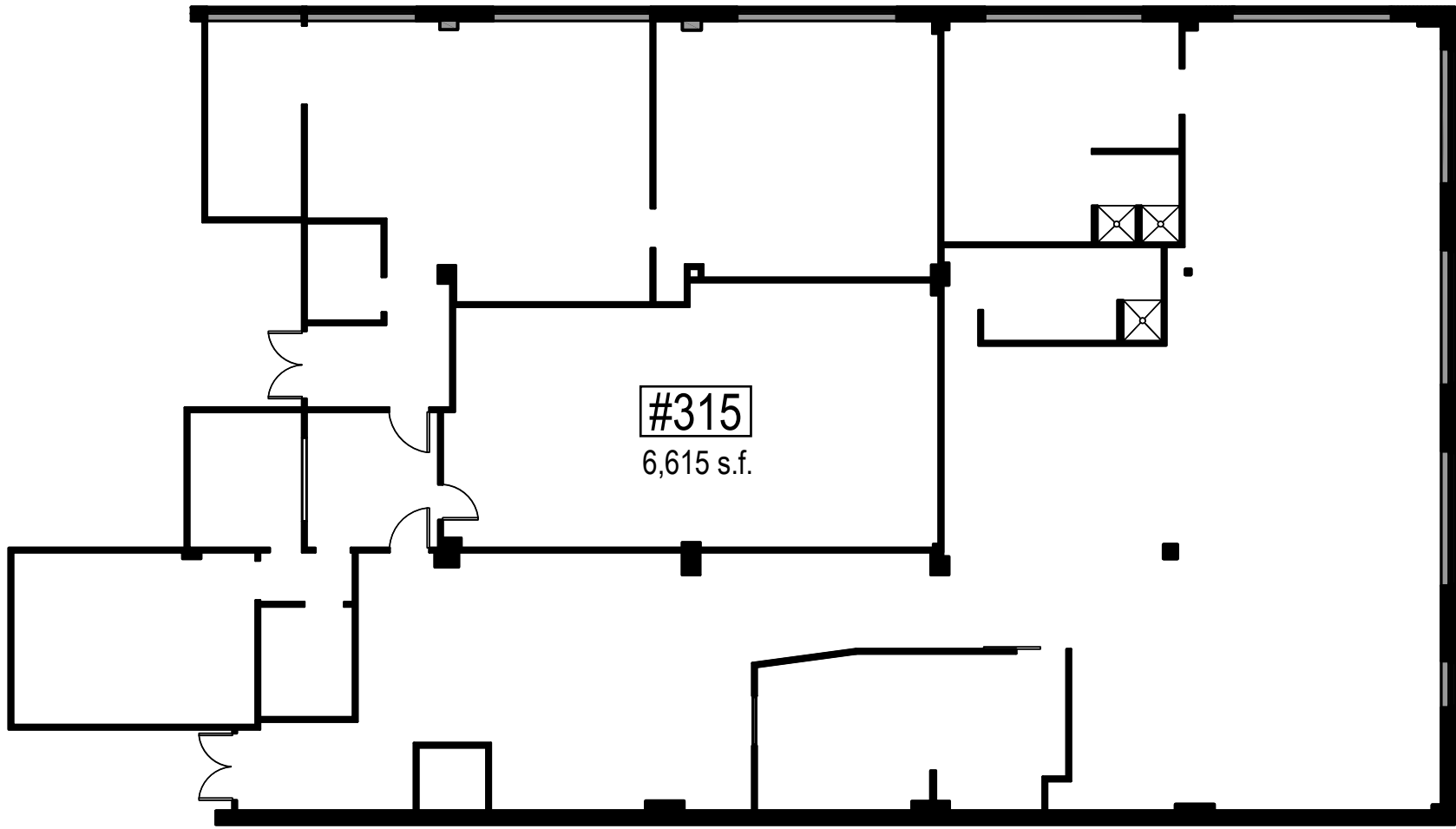
#301
9,525 s.f.



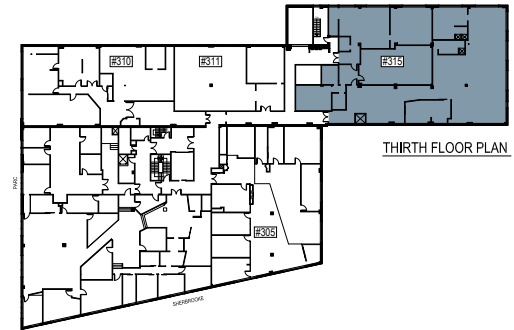
THIRD FLOOR PLAN





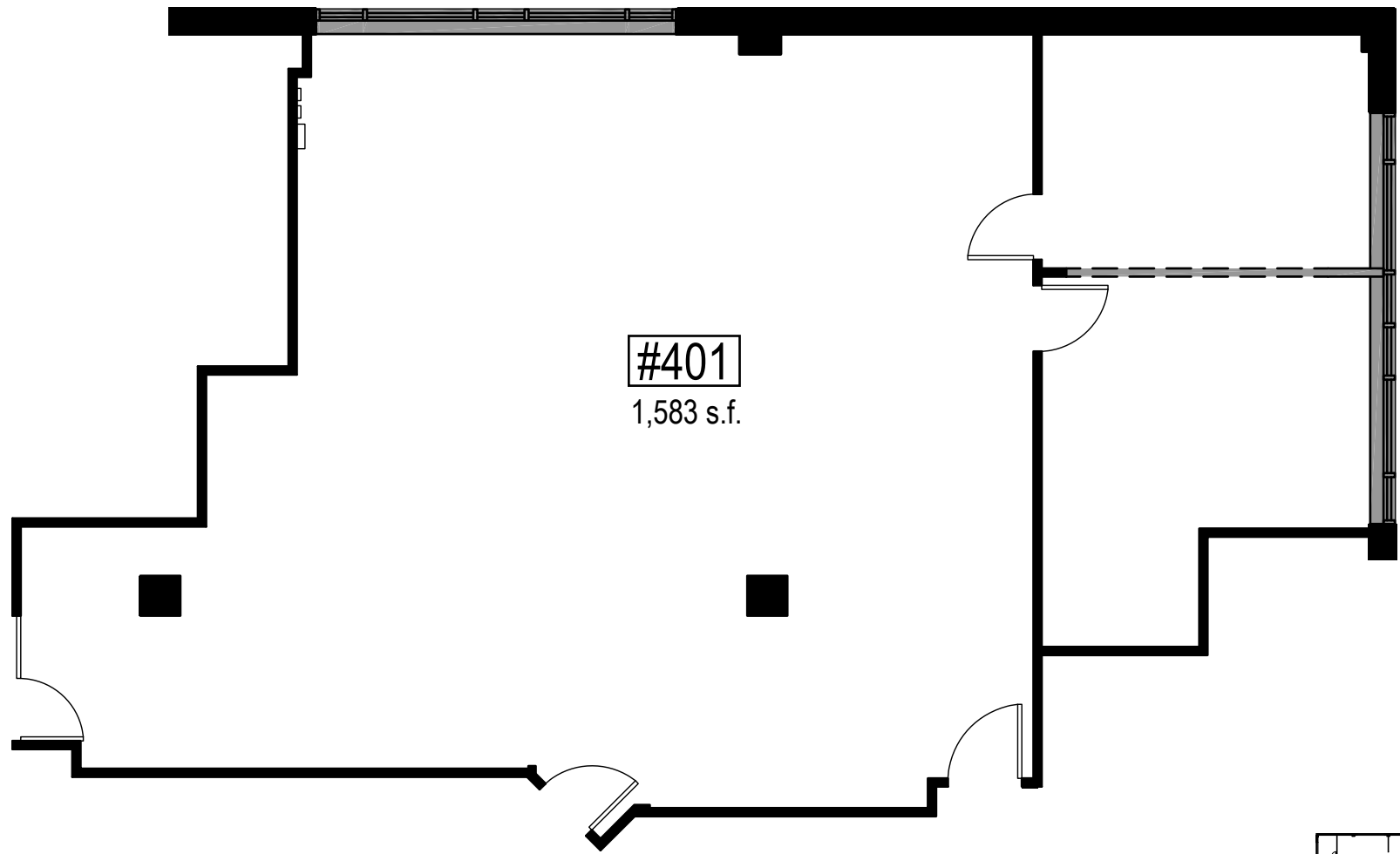


#315
6,615 s.f.



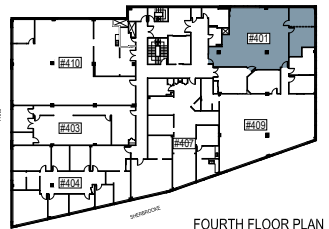
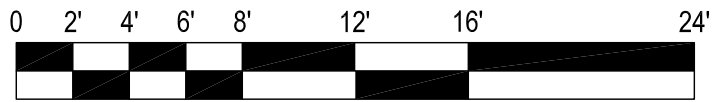
THIRD FLOOR PLAN





#401

1,583 s.f.



270 Prince
 Studio 200
 Montréal
 Québec
 H3C 2N3

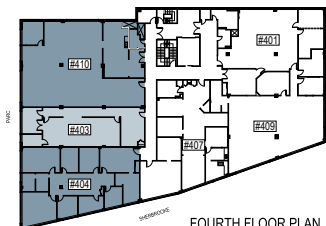
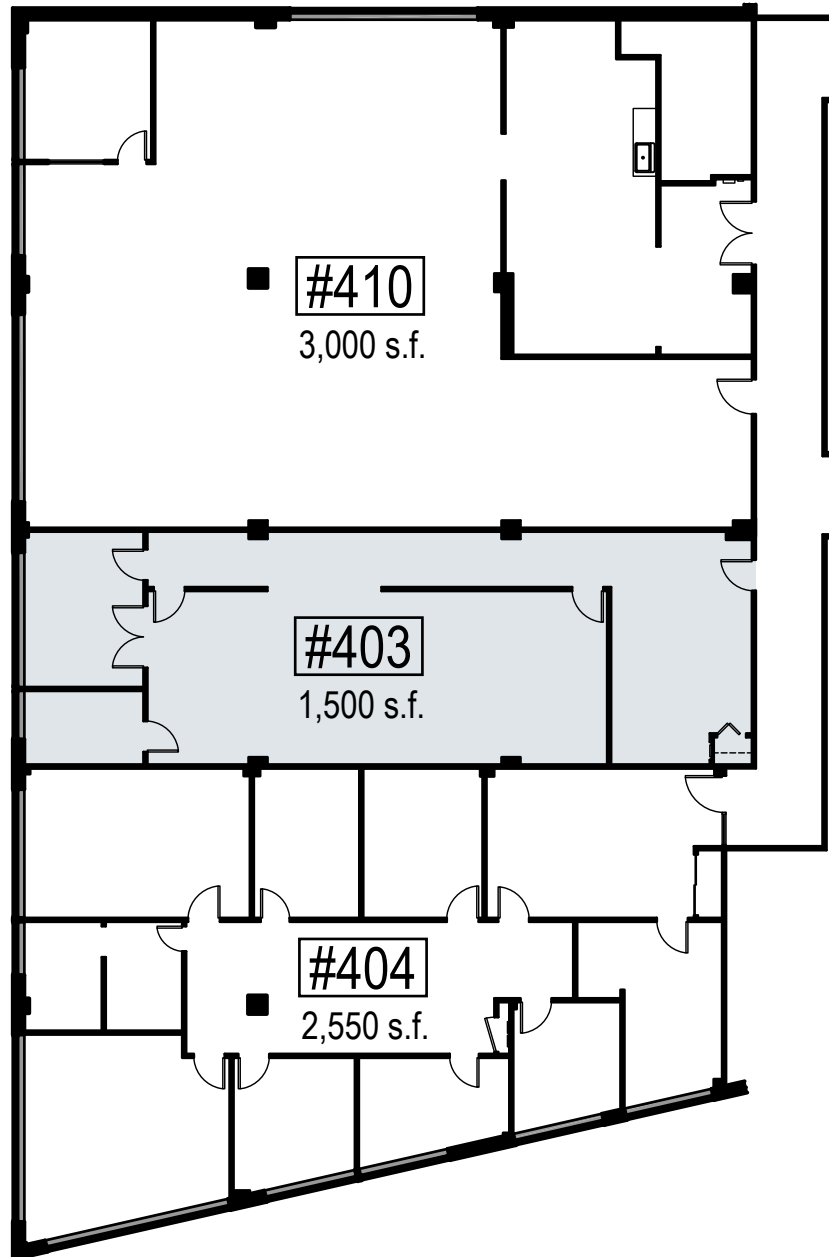
T. 514.861.5122
 F. 514.861.5383
 www.rubinrotman.com

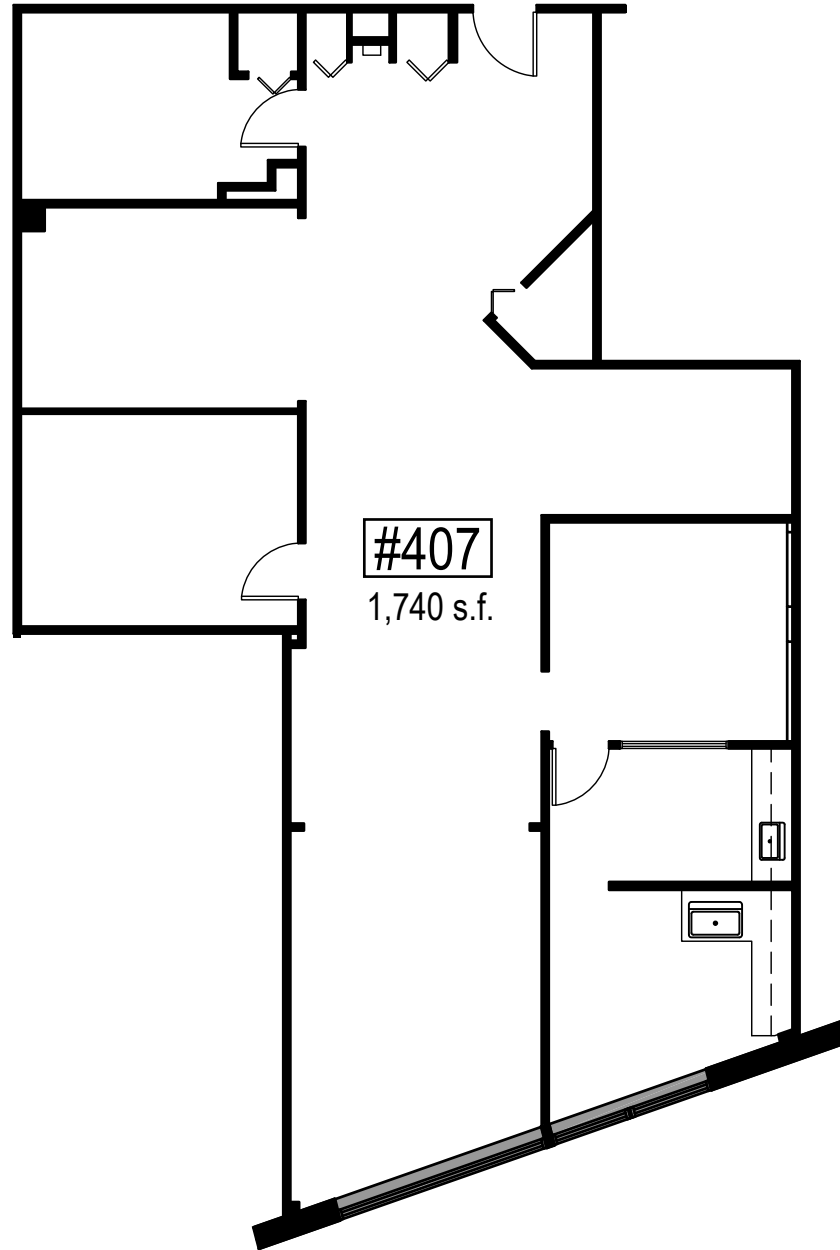
Rubin & Rotman
 architectes



BRISTOL REALTY CO. LTD.
 279 Sherbrooke Street West
 Suite 405
 Montreal, QC H2X 1Y2

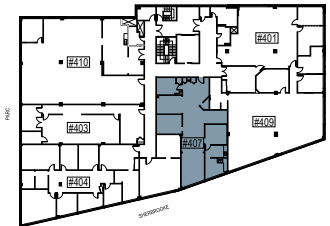
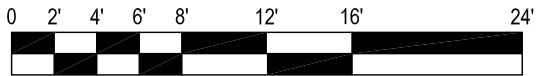
T. 514.844.3330
 F. 514.844.3350
 bristol@openface.ca



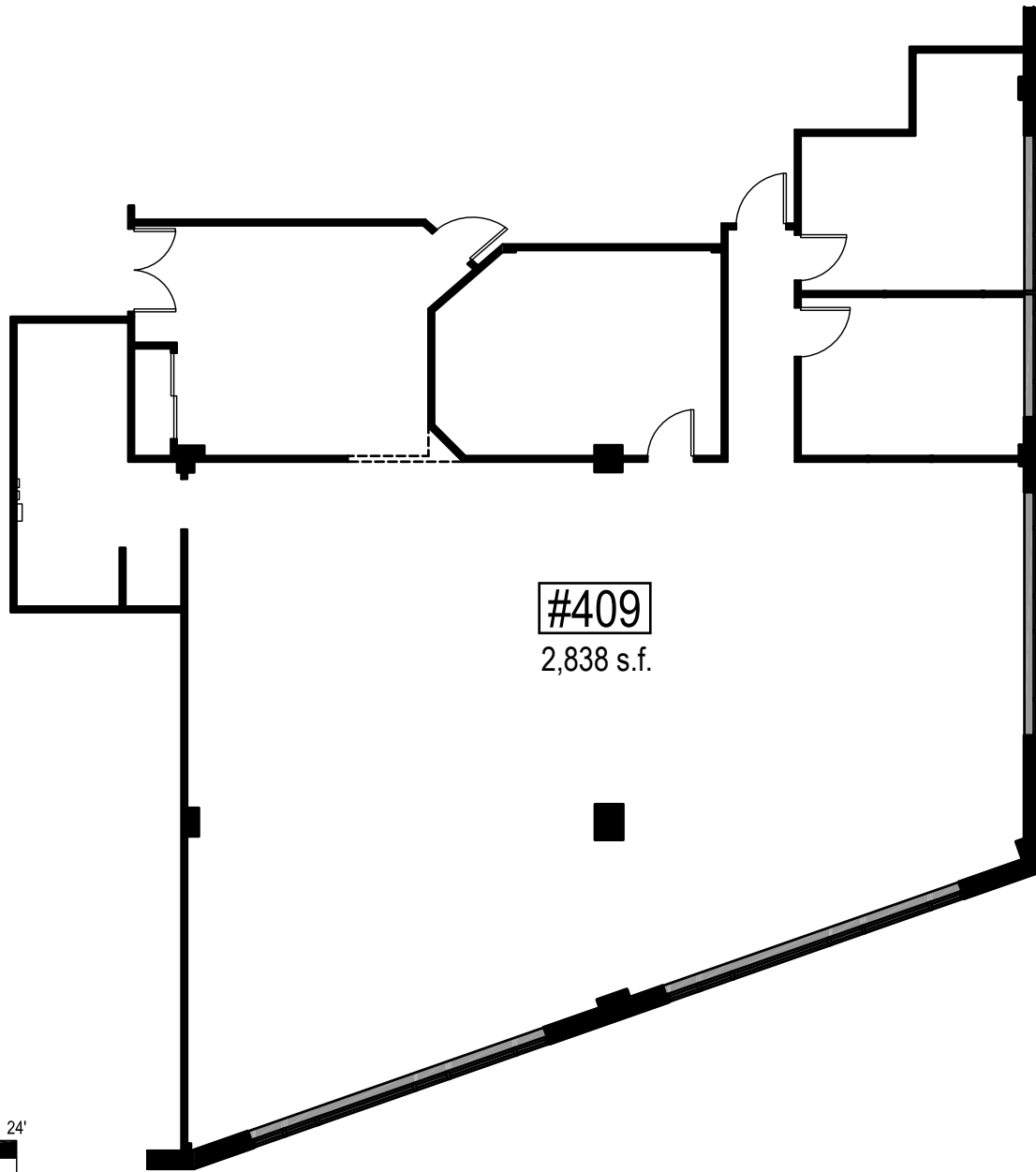


#407

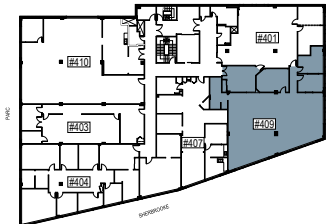
1,740 s.f.



FOURTH FLOOR PLAN



#409
2,838 s.f.



FOURTH FLOOR PLAN